



Children's Board
HILLSBOROUGH COUNTY

www.ChildrensBoard.org

2024 FAMILY GUIDE

for Services in Hillsborough County
funded by your Children's Board



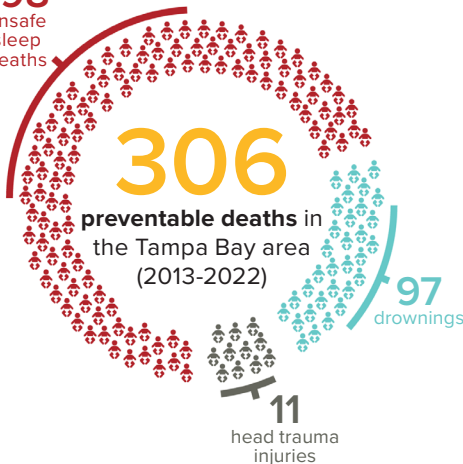
1002 East Palm Avenue • Tampa, FL 33605 • (813) 229-2884

The Children's Board invests in the health and well-being of all children and families in Hillsborough County. For parents and caregivers, children are the most precious gifts, and it's our responsibility to keep them safe. The Prevent Needless Deaths awareness campaign educates caregivers about 100% preventable child deaths related to drowning, unsafe infant sleep, and head trauma.

Things that **kill kids** should come with warning signs



198
unsafe
sleep
deaths



**More infants
die in adult
beds than
anywhere else.**

**Drowning kills
more kids ages
1-4 than any
other cause.**

**Shaking infants,
even once, can
kill or injure
them for life.**

**Learn to prevent
an accidental death:**

PreventNeedlessDeaths.com



BOARD MEMBERS

Robin Wright DeLaVergne

Gubernatorial Appointee

Chair

The Honorable Katherine Essrig

Circuit Judge 13th Judicial Court

Vice Chair

Beth Pasek

Community Development Administrator Suncoast Region

Department of Children and Families

Secretary/Treasurer

Van Ayres

Superintendent Hillsborough County Public Schools

Megan Proulx Dempsey

Gubernatorial Appointee

Lynn Gray

School Board Member

Hillsborough County Public Schools

Andrew J. Mayts Jr.

Gubernatorial Appointee

Gwen Myers

District 3 Hillsborough County Commission

Edwin Narain

Gubernatorial Appointee

Sarah Naumowich

Gubernatorial Appointee

Rebecca Bacon

Executive Director

TABLE OF CONTENTS

About the Children’s Board of Hillsborough County	
Mission	2
Vision	2
Conference Center	2
Our Budget	3
Children’s Board Family Resource Centers	
Children’s Board Family Resource Centers	4
Achieve Plant City	
Literacy Is Fun Together	6
Bay Area Legal Services	
Lawyers Helping Kids	7
Big Brothers Big Sisters of Tampa Bay	
1-to-1 Mentoring (Elementary)	8
1-to-1 Mentoring (Middle)	9
Boys & Girls Clubs of Tampa Bay	
After-Zone Elementary School Initiative	10
After-Zone Middle School Initiative	11
Brandon Art Masters! (BAM!)	12
Champions for Children	
Baby Bungalow	13
Family Focus	14
Layla’s House	15
Parents as Teachers (PAT)	16
Children’s Home Network	
Kinship Hillsborough	17
Reaching and Inspiring Students Everywhere (RAISE)	18
Supporting and Empowering Educational and Developmental Services (SEEDS)	19
Dawning Family Services	
A Path to Prevention	20
Housing for Success	21
Early Childhood Council of Hillsborough County	
Community Developmental Screening	22
Inclusion Support Services	23

TABLE OF CONTENTS

Early Learning Coalition of Hillsborough County	
School Readiness Funding	24
Easterseals Florida, Inc.	
Early Learning and Intervention Program	25
The Incredible Years	26
Family Enrichment Center, The	
Kinship Care	27
Family Healthcare Foundation, The	
Connecting Kids to Care	28
Florida Education Fund	
CodeMasters	29
Florida State University	
Successful Start	30
Girl Scouts of West Central Florida	
Girl Scout Troop Program	31
Glazer Children’s Museum	
Children’s Board Free Tuesday	32
Learn & Play Tampa Bay	33
Pop Up Play in Plant City	34
Gulf Coast Jewish Family and Community Services	
Good Afternoon Friends and Amigos	35
Padres De Crianza	36
Teen Parent Engagement Program	37
Healthy Start Coalition of Hillsborough County	
Healthy Families Hillsborough	38
HealthySteps Hillsborough	39
Safe Baby Plus	40
High 5, Inc.	
Water Warriors	41
Hillsborough Community College Foundation	
Quality Early Education System	42
Hillsborough Education Foundation, Inc.	
Tech Connect	43
Hispanic Services Council	
La Red de Padres Activos/Network of Active Parents	44

TABLE OF CONTENTS

Housing Authority of the City of Tampa

Building Family Financial Skills	45
Village Link Up	46

Instruments 4 Life Inc.

Music Outreach Program	47
------------------------------	----

Joshua Way of Hope

Building a Better Me	48
Life Skills 360 Training Institute	49

Just Initiative

Woven Empowerment – WE Program	50
--------------------------------------	----

Metropolitan Ministries

C.R.E.A.T.E. School Age Program	51
First Hug	52
Pathways to Hope	53

One More Child

One More Child Family Support	54
-------------------------------------	----

Parents and Children Advance Together (PCAT) Literacy Ministries

South County Literacy Initiative	55
Sulphur Springs Literacy Initiative	56

Positive Spin

Empowering a Community with Hope (E.A.C.H. One)	57
---	----

Preserve Vision Florida

Children's Vision Health and Safety Services	58
--	----

REACHUP, Inc.

Giving Resources and Opportunities with Trust and Hope (GROWTH) with Doulas and Dads	59
---	----

Redefiners: World Languages

Multilingual Citizens Program (MCP)	60
Global Explorers Program	61

Renaissance Learning

myON Reader	62
-------------------	----

Resource Empowerment Centre

Villages Café	63
---------------------	----

TABLE OF CONTENTS

Rooted in Play Corp	
Popup Adventure Playground Project	64
Seniors in Service of Tampa Bay	
Readers in Motion.	65
Spring of Tampa Bay, The	
Family Safety from Domestic Violence	66
St. Joseph's Children's Hospital	
Mobile Health and Safety Education	67
St. Joseph's Women's Hospital	
Community Maternity Clinic	68
Supporting Motherhood and More.	69
Success 4 Kids and Families	
Successful Families	70
Tampa Metropolitan Area YMCA	
Sulphur Springs YMCA Out of School Time	71
Tampa Museum of Art	
Children's Board Free Family Day.	72
University Area Community Development Corporation	
Get Moving! Mind, Body & Soul.	73
University of South Florida Board of Trustees, The	
Helping our Toddlers, Developing our Children's Skills (HOTDOCS) & Developing Our Children's Skills K-5 (DOCS K-5).	74
Hillsborough HIPPY Parent Involvement Project.	75
Program-Wide Positive Behavior Support (PWPBS).	76
Trauma-Informed Schools: Tiered Interventions.	77

CHILDREN'S BOARD OF HILLSBOROUGH COUNTY FOCUS AREAS

The Children's Board of Hillsborough County has been investing in children and families for 35 years. Created by referendum in 1988, the Children's Board funds programs and services at the community level to support children and families. Children's Board investments ensure:

Children are Developmentally on Track:

Early Identification of developmental needs for children birth to age five is essential for optimizing a child's learning potential and allows caregivers to learn more about their child's development.

Children are Healthy and Safe:

Early preventative health and education; preparing a family to develop nurturing and healthy habits which are enhanced by coordination with community partners including healthcare systems and primary care providers.

Children are Ready to Learn and Succeed:

School readiness and academic support for children is designed in a way that fosters academic readiness by age eight. Quality early learning promotes early caregiver involvement and professional development for early care educators. Activities may support character development, provide positive role modeling, and motivate students to learn in safe environments.

Family Support:

Support for the whole family by developing informal supports, stability and overall well-being. These relationships establish the foundation for secure attachments and future physical, cognitive and social-emotional health.

GOVERNING BOARD

The Children's Board is governed by ten Board Members from the local community. Five are "ex-officio", meaning they serve by virtue of the office they hold. The remaining five members of the Board are Hillsborough County citizens appointed by the Governor of Florida. The Governing Board hires the Executive Director, who is responsible for the leadership and management of the agency.

MISSION

The Children's Board of Hillsborough County invests in partnerships and quality programs to support the success of all children in Hillsborough County.

VISION

Hillsborough County will be recognized as one of the top places in the nation to raise children.

CONFERENCE CENTER

Our administrative building on Palm Avenue also serves as a conference center available at no cost to neighborhood, community, and civic organizations. Free parking, easy access to public transportation, and a central location make it a perfect space for community events. For more information about using our conference center, call (813) 229-2884 or visit childrensboard.org/reservations.

For More
Information
PLEASE SCAN



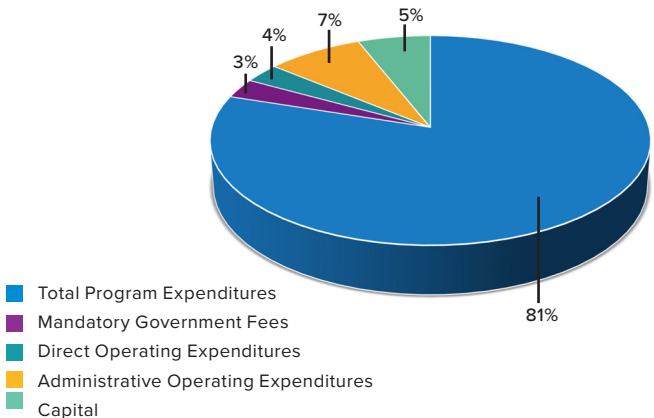
OUR BUDGET

The Children’s Board of Hillsborough County oversees a budget of \$74.9 million. The chart below represents total revenue and expenditures for Fiscal Year 2024.

Where the Money Comes From

Revenue Sources

Ad-Valorem Taxes	69,295,183
Investment Income	2,220,000
Administrative Services Organization (ASO)	600,000
Other Community Partner Funding	410,000
Miscellaneous Income	11,000
Total Revenue	72,536,183
Fund Balance	2,395,370
Total Budget	74,931,553



CHILDREN'S BOARD FAMILY RESOURCE CENTERS

Children's Board Family Resource Centers

Program Description

The Children's Board Family Resource Centers provide opportunities for parents or caregivers and their children to participate in parent / child developmental playgroups, developmental screenings, and health and safety education. In addition, counseling, pediatric well-child visits, immunizations and hearing or vision screening are provided for qualifying families. The centers have relationships with community partners and volunteers to focus on supporting families with children from birth to eighteen years old. The centers are designed to support families and communities become happier, healthier, and stronger.

Locations:

Brandon

1271 Kingsway Road
Brandon, FL - 33510
(813) 740-4634

Central Tampa

1002 East Palm Avenue
Tampa, FL - 33605
(813) 204-1741

Doretha Wynn Edgecomb Children's Board Family Resource Center in Temple Terrace

5892 East Fowler Avenue
Temple Terrace, FL - 33617
(813) 435-3032

Plant City

301 North Palmer Street
Plant City, FL - 33563
(813) 752-8700

North Tampa

116 West Fletcher Avenue
Tampa, FL - 33612
(813) 558-1877

South County

3030 East College Avenue
Ruskin, FL - 33570
(813) 641-5600

Town 'N Country

7520 West Waters Avenue, Suite #8
Tampa, FL - 33615
(813) 356-1703

Target Population Served:

Families with children birth to 18

Service Area/Geographic Focus:

Hillsborough County

Bilingual Services: Yes - Spanish

Funding Amount: \$3,188,893

Contact Information:

Address: Lutheran Services Florida
3627 West Waters Avenue
Tampa, FL 33614

Phone: (813) 704-1741

Website: www.familysupporthc.org

Social Media: Facebook: [Children's Board Family Resource Centers](#)
Instagram: [@Cbfamilyresourcecenters](#)

Subcontracts: None

ACHIEVE PLANT CITY

Literacy Is Fun Together

Program Description

The Literacy Is Fun Together (LIFT) program supports family literacy. Parents are engaged in educational activities with their children. The program offers early childhood education classes, developmental screenings, literacy skill assessments, and reading workshops.

Target Population Served

Children eighteen months through 5th grade and their parents/ caregivers

Service Area/Geographic Focus:

East Hillsborough County

Bilingual Services: Yes - Spanish

Funding Amount: \$309,192

Contact Information:

Address: 202 West Reynolds Street
Plant City, FL 33563

Phone: (813) 752-4010

Website: www.achieveplantcity.org

Social Media: Facebook: [Achieve Plant City](#)
Instagram: [@achieve_plant_city](#)

Subcontracts: None

Lawyers Helping Kids

Program Description

Lawyers Helping Kids supports children and families with services related to housing, public benefits, employment, domestic violence, paternity, custody, child support, guardianship, and adoption. In addition, eligible families can be referred to Wheels of Success to meet their transportation needs.

Target Population Served

Pregnant women and families with children birth through 5th grade

Service Area/Geographic Focus:

Hillsborough County

Bilingual Services: Yes - Spanish

Funding Amount: \$744,837

Contact Information:

Address: 1302 North 19th Street, Suite #400
Tampa, FL 33605

Phone: (813) 232-1343

Website: www.bals.org

Social Media: Facebook: [Bay Area Legal Services](#)

X: [@Bay_Area_Legal](#)

Instagram: [@Bay_Area_Legal](#)

Subcontracts: None

BIG BROTHERS BIG SISTERS OF TAMPA BAY

1-to-1 Mentoring (Elementary)

Program Description

The 1-to-1 Comprehensive Mentoring Program provides professionally supported mentoring services to children and youth who can benefit from a caring and supportive relationship. The program supports children and families by connecting a “Little” (youth) with a “Big” (mentor) to achieve a safe, long, and strong match. Volunteers, parents, mentors, and the youth themselves must commit to actively participate for a minimum of fifteen months or longer to maximize the outcome.

Target Population Served

Hillsborough County Elementary School students from kindergarten to 5th grade

Service Area/Geographic Focus:

Hillsborough County

Bilingual Services: Yes - Spanish

Funding Amount: \$283,400

Contact Information:

Address: 5555 West Waters Ave, Suite #607
Tampa, FL 33634

Phone: (813) 769-3600

Website: www.bbbstampabay.org

Social Media: Facebook: [Big Brothers Big Sisters of Tampa Bay](#)

X: [@bbbs_tampabay](#)

Instagram: [@bbbs_tampabay](#)

Subcontracts: None

BIG BROTHERS BIG SISTERS OF TAMPA BAY

1-to-1 Mentoring (Middle)

Program Description

The 1-to-1 Comprehensive Mentoring Program provides professionally supported mentoring services to children and youth who can benefit from a caring and supportive relationship. The program supports children and families by connecting a “Little” (youth) with a “Big” (mentor) to achieve a safe, long, and strong match. Volunteers, parents, mentors, and the youth themselves must commit to actively participate for a minimum of fifteen months or longer to maximize the outcome.

Target Population Served

Hillsborough County Middle School students

Service Area/Geographic Focus:

Hillsborough County

Bilingual Services: Yes - Spanish

Funding Amount: \$283,400

Contact Information:

Address: 5555 West Waters Ave, Suite #607
Tampa, FL 33634

Phone: (813) 769-3600

Website: www.bbbstampabay.org

Social Media: Facebook: [Big Brothers Big Sisters of Tampa Bay](https://www.facebook.com/BigBrothersBigSistersofTampaBay)
X: [@bbbs_tampabay](https://twitter.com/bbbs_tampabay)
Instagram: [@bbbs_tampabay](https://www.instagram.com/bbbs_tampabay)

Subcontracts: None

BOYS & GIRLS CLUBS OF TAMPA BAY

After-Zone Elementary School Initiative

Program Description

After-Zone Elementary School program provides after school support to students every day school is in session. This includes homework assistance, character development programs, health and wellness activities and academic support. The program runs when school dismisses until 6pm. Summer programs will be offered if the school is open and will run Monday through Friday. Included in summer programs are educational and fun field trips, lunch and snack, sports and character programs and continued academic support.

Target Population Served

Children in kindergarten through 5th grade

Service Area/Geographic Focus:

DeSoto, Morgan Woods and Mort Elementary Schools

Bilingual Services: Yes - Spanish

Funding Amount: \$508,136

Contact Information:

Address: 1307 North MacDill Avenue
Tampa, FL 33607

Phone: (813) 769-7533

Website: www.bgctampa.org

Social Media: Facebook: [Boys and Girls Clubs of Tampa Bay](#)
X: [@bgctampa](#)

Instagram: [@bgctampa](#)

Subcontracts: None

BOYS & GIRLS CLUBS OF TAMPA BAY

After-Zone Middle School Initiative

Program Description

The After-Zone Middle School Initiative provides out of school time and summer programming for youth. The program supports children and families through service projects, STEM learning, cultural art activities, leadership development, fitness, and the exploration of career fields or colleges aligned with the youths interests. Power Hour: Making Minutes Count will be offered before school begins and will be dedicated to homework assistance and tutoring.

Target Population Served

Students in 6th, 7th, or 8th grade at Pierce, Marshall, Shields, and Tomlin Middle School

Service Area/Geographic Focus:

Town 'N Country, Plant City, Ruskin, and Wimauma

Bilingual Services: Yes - Spanish

Funding Amount: \$560,000

Contact Information:

Address: 1307 North MacDill Avenue
Tampa, FL 33607

Phone: (813) 769-7533

Website: www.bgctampa.org

Social Media: Facebook: [Boys and Girls Clubs of Tampa Bay](#)
X: [@bgctampa](#)
Instagram: [@bgctampa](#)

Subcontracts: None

Brandon Art Masters! (BAM!)

Program Description

Brandon Art Masters provides elementary school students a high-quality art instruction and exposure after-school program. Working with professional artists and materials, students explore a variety of art mediums and showcase their work to the public two times per year. This program includes art-focused field trips.

Target Population Served

Children in kindergarten through 5th grade

Service Area/Geographic Focus:

Carey Brandon Club

Bilingual Services: No

Funding Amount: \$91,015

Contact Information:

Address: 510 East Sadie Street
Brandon, FL 33510

Phone: (813) 444-0375

Website: www.bgctampa.org

Social Media: Facebook: [Boys and Girls Clubs of Tampa Bay](#)

X: [@bgctampa](#)

Instagram: [@bgctampa](#)

Subcontracts: None

CHAMPIONS FOR CHILDREN

Baby Bungalow

Program Description

Baby Bungalow is an early childhood resource center for parents and caregivers. New and experienced parents alike can benefit from the wide variety of adult-child playgroups, workshops, developmental screenings and other activities.

Target Population Served

All services are for “any baby, any family” in Hillsborough County

Service Area/Geographic Focus:

Hillsborough County

Bilingual Services: Yes - Spanish

Funding Amount: \$286,794

Contact Information:

Address: 3108 West Azelee Street
Tampa, FL 33609

Phone: (813) 673-4646

Website: www.cfctb.org/program/baby-bungalow

Social Media: Facebook: [Baby Bungalow](#)

X: [@cfctampabay](#)

Instagram: [@cfc_tampabaybabycafe](#)

Subcontracts: None

CHAMPIONS FOR CHILDREN

Family Focus

Program Description

The Family Focus program provides prenatal and postpartum education and support to adults with substance abuse and behavioral health concerns who are pregnant or are parenting children birth through middle school. The program will support children and families by offering intensive case management services, developmental screenings, parenting education and support to promote the birth of healthy newborns. The program is designed to support the positive relationships of moms, dads, and child to promote the birth of substance free babies.

Target Population Served

Pregnant and parenting mothers and fathers

Service Area/Geographic Focus:

Participants in treatment at Cove Behavioral Health in Hillsborough County

Bilingual Services: Yes - Spanish

Funding Amount: \$492,681

Contact Information:

- Address:** 4422 East Columbus Drive
Tampa, FL 33605
- Phone:** (813) 673-4646 Ext. 7000
- Website:** www.cfctb.org
- Social Media:** Facebook: [Champions for Children](#)
X: [@cfctampabay](#)
Instagram: [@cfctampabay](#)
- Subcontracts:** Cove Behavioral Health, Inc.

CHAMPIONS FOR CHILDREN

Layla's House

Program Description

Layla's House is in the heart of Sulphur Springs and is a community-based learning and resource center that provides playgroups, workshops, developmental checkups, community activities and support for parents and caregivers with children birth to age five as well as for expectant moms and dads.

Target Population Served

All services are for "any baby, any family" in Hillsborough County

Service Area/Geographic Focus:

Hillsborough County

Bilingual Services: Yes - Spanish

Funding Amount: \$382,479

Contact Information:

Address: 1506 East Eskimo Avenue
Tampa, FL 33604

Phone: (813) 443-5004

Website: www.cfctb.org

Social Media: Facebook: [Layla's House](#)
X: [@cfctampabay](#)
Instagram: [@cfctampabay](#)

Subcontracts: None

CHAMPIONS FOR CHILDREN

Parents as Teachers (PAT)

Program Description

The Parents as Teachers (PAT) program provides families with a personal parent educator who visits the home and support groups meet monthly. PAT provides learning activities for the child, models age appropriate activities, introduces the use of books into play, and hosts other fun activities to prepare the child for school. The program offers screenings in overall development.

Target Population Served

Parents and caregivers of young children birth to age five

Service Area/Geographic Focus:

Hillsborough County

Bilingual Services: Yes - Spanish and Creole

Funding Amount: \$1,369,711

Contact Information:

Address: 3108 West Azelee Street
Tampa, FL 33609

Phone: (813) 673-4646

Website: www.cfctb.org

Social Media: Facebook: [Champions for Children](#)
Facebook: [Parents As Teachers Tampa](#)
X: [@cfctampabay](#)
Instagram: [@cfctampabay](#)

Subcontracts: None

CHILDREN'S HOME NETWORK

Kinship Hillsborough

Program Description

The Kinship Hillsborough program supports children residing with a relative caregiver or another caring adult by providing case management, support groups, and developmental screenings. The program provides in-home wellness services to caregivers with health-related concerns. In addition, Bay Area Legal Services provides education on custody matters, and supports family stability to ensure the safety, social-emotional and academic needs of the children are met.

Target Population Served

Relative and non-relative caregivers with children birth through enrolled in middle school

Service Area/Geographic Focus:

Hillsborough County

Bilingual Services: Yes - Spanish

Funding Amount: \$560,000

Contact Information:

Address: 3450 Buschwood Park Drive, Suite #195
Tampa, FL 33618

Phone: (888) 920-8761 or (813) 901-3409

Website: www.childrenshomenetwork.org

Social Media: Facebook: [Children's Home Network](#)

Facebook: [CHNKinship](#)

Instagram: [@childrenhomenet](#)

X: [@childrenhomenet](#)

Subcontracts: None

CHILDREN'S HOME NETWORK

Reaching and Inspiring Students Everywhere (RAISE)

Program Description

Reaching and Inspiring Students Everywhere (RAISE) provides children from birth through 3rd grade and their families with access to services that promote positive behavioral, developmental, and educational success. The program works with children who are at risk of having experienced trauma, presenting challenging behaviors, developmental delay or a diagnosed disability affecting a child's readiness for school, or academic performance.

Target Population Served

Children birth to 3rd grade and their families

Service Area/Geographic Focus:

Hillsborough County

Bilingual Services: Yes - Spanish

Funding Amount: \$1,054,742

Contact Information:

Address: 3450 Buschwood Park Drive, Suite #195
Tampa, FL 33618

Phone: (813) 605-2354

Website: www.childrenshomenetwork.org

Social Media: Facebook: [Children's Home Network](#)

Instagram: [@childrenhomenet](#)

X: [@childrenhomenet](#)

Subcontracts: None

CHILDREN'S HOME NETWORK

Supporting and Empowering Educational and Developmental Services (SEEDS)

Program Description

SEEDS provides case management services and referrals with an emphasis on engaging families in their child's educational, social and developmental experiences. The program works with teachers to coordinate services and support success in school. It offers a family assessment, literacy support services for students and shares community resources with all families.

Target Population Served

Children birth to 3rd grade and their families

Service Area/Geographic Focus:

Hillsborough County

Bilingual Services: Yes - Spanish and Creole

Funding Amount: \$2,228,096

Contact Information:

- Address:** 3450 Buschwood Park Drive, Suite #195
Tampa, FL 33618
- Phone:** (813) 901-3439
- Website:** www.childrenshomenetwork.org
- Social Media:** Facebook: [Children's Home Network](https://www.facebook.com/Children's-Home-Network)
Instagram: [@childrenhomenet](https://www.instagram.com/@childrenhomenet)
X: [@childrenhomenet](https://www.x.com/@childrenhomenet)
- Subcontracts:** None

DAWNING FAMILY SERVICES

A Path to Prevention

Program Description

A Path to Prevention provides case management services to families who are at-risk of being homeless by providing services to help them maintain or access stable housing. Case Managers also help them apply for public benefits, obtain identity documents, employment guidance, referrals to community resources, as well as support with legal and financial assistance.

Target Population Served

Pregnant women and families with children birth to eighteen

Service Area/Geographic Focus:

Hillsborough County

Bilingual Services: Yes - Spanish

Funding Amount: \$450,032

Contact Information:

Address: 6718 North Armenia Avenue
Tampa, FL 33604

Phone: (813) 875-2024

Website: www.DawningFamilyServices.org

Social Media: Facebook: [Dawning Family Services](https://www.facebook.com/DawningFamilyServices)

X: [@dawningfs](https://twitter.com/dawningfs)

Instagram: [@dawningfamilyservices](https://www.instagram.com/dawningfamilyservices)

Subcontracts: None

DAWNING FAMILY SERVICES

Housing for Success

Program Description

Housing for Success provides emergency shelter and support services for families with children under the age of 18 who are experiencing homelessness. Families receive individualized, wrap around case management to assist them in ending their homelessness through housing search and placement; financial assistance for housing; referrals to community resources; and post-shelter services to ensure stability.

Target Population Served

Homeless families with children birth to 18

Service Area/Geographic Focus:

Hillsborough County

Bilingual Services: Yes - Spanish

Funding Amount: \$320,363

Contact Information:

Address: 6718 North Armenia Avenue
Tampa, FL 33604

Phone: (813) 875-2024

Website: www.DawningFamilyServices.org

Social Media: Facebook: [Dawning Family Services](https://www.facebook.com/DawningFamilyServices)

X: [@dawningfs](https://twitter.com/dawningfs)

Instagram: [@dawningfamilyservices](https://www.instagram.com/dawningfamilyservices)

Subcontracts: None

Community Developmental Screening

Program Description

The Community Developmental Screening Program provides monthly community-based developmental screening events for children birth to five years of age. When warranted, the program connects families of children with developmental concerns to appropriate follow-up services (e.g. formal evaluation providers, early intervention, or community based supports). Screenings are conducted in the areas of vision, hearing, speech/language, behavior, and overall development.

Target Population Served

Children birth to five years of age who are not yet in kindergarten

Service Area/Geographic Focus:

Hillsborough County

Bilingual Services: Yes - Spanish

Funding Amount: \$711,158

Contact Information:

Address: P.O. Box 130449
Tampa, FL 33681

Email: screeningmanager@ecctampabay.org

Website: www.ecctampabay.org

Social Media: Facebook: [Ecctampabay](https://www.facebook.com/Ecctampabay)

Subcontracts: None

EARLY CHILDHOOD COUNCIL OF HILLSBOROUGH COUNTY

Inclusion Support Services

Program Description

Inclusion Support Services provides child care centers and family child care homes with resources and training to support early childhood development and/or behavioral concerns. Services include on-site observations of children/teachers/classrooms to develop an intervention plan based on strengths, needs, and accommodations for an inclusive setting. An individualized in-home parent education service will bridge continuity of care between the educational setting to the home.

Target Population Served

Early childhood professionals and families with children, birth to five years of age, in child care center or family day care home

Service Area/Geographic Focus:

Hillsborough County

Bilingual Services: Yes - Spanish

Funding Amount: \$503,054

Contact Information:

Address: P.O. Box 130449
Tampa, FL 33681

Email: inclusionmanager@ecctampabay.org

Website: www.ecctampabay.org

Social Media: Facebook: [Ecctampabay](https://www.facebook.com/Ecctampabay)

Subcontracts: None

EARLY LEARNING COALITION OF HILLSBOROUGH COUNTY

School Readiness Funding

Program Description

The School Readiness program provides financial assistance to eligible families so they may have access to a network of early care and education programs to help ensure they enter kindergarten ready to succeed. Parents may apply online at www.elchc.org.

Target Population Served

Children birth to nine years of age. Priority is given to children whose parents are economically disadvantaged, children who have been determined to be at risk of abuse, neglect or exploitation, and children with special needs

Service Area/Geographic Focus:

Hillsborough County

Bilingual Services: Yes - Spanish

Funding Amount: \$775,770

Contact Information:

Address: 6302 East Dr. Martin Luther King Jr Boulevard
Suite #100
Tampa, FL 33619

Phone: (813) 515-2340

Website: www.elchc.org

Social Media: Facebook: [Early Learning Coalition of Hillsborough County](#)

X: [@elchillsborough](#)

Instagram: [@elchillsborough](#)

Subcontracts: None

Early Learning and Intervention Program

Program Description

The Early Learning and Intervention Program provides gap early intervention services for children birth to five years old experiencing delays in development but may not meet the eligibility criteria for Early Steps or Child Find. Easterseals offers caregiver/child intervention services, parent education, and service coordination. It is an in-home program with an option of some service occurring in the child's school setting.

Target Population Served

Parents with children birth to five who are not eligible for services through Early Steps or Child Find

Service Area/Geographic Focus:

Hillsborough County

Bilingual Services: Yes - Spanish

Funding Amount: \$536,283

Contact Information:

Address: 2403 East Henry Avenue
Tampa, FL 33610

Phone: (813) 868-7191

Website: www.easterseals.com/florida

Social Media: Facebook: [Easterseals Florida](https://www.facebook.com/EastersealsFlorida)
X: [@EasterSealsFL](https://twitter.com/EasterSealsFL)
Instagram: [@EasterSealsFL](https://www.instagram.com/EasterSealsFL)

Subcontracts: None

The Incredible Years

Program Description

The Incredible Years is an evidence-based program providing a 14-week program that focuses on building strong parent-child relationships, and preventing negative behavior through social-emotional learning, self-regulation, and problem-solving. Program sessions are held in the community. This program also provides in home support for individualized family focus.

Target Population Served

Serving parents/caregivers as well as children ages three to eight years of age with or without a disability.

Service Area/Geographic Focus:

Hillsborough County

Bilingual Services: Yes - Spanish

Funding Amount: \$855,614

Contact Information:

Address: 2010 Crosby Way
Winter Park, FL 32792

Phone: (689) 444-1731

Website: www.easterseals.com/florida

Social Media: Facebook: [Easterseals Florida](https://www.facebook.com/EastersealsFlorida)
X: [@EasterSealsFL](https://twitter.com/EasterSealsFL)
Instagram: [@EasterSealsFL](https://www.instagram.com/EasterSealsFL)

Subcontracts: None

FAMILY ENRICHMENT CENTER, THE

Kinship Care

Program Description

The Kinship Care program provides intensive case management for children residing with a relative caregiver or with another caring adult. Services include compassionate help, training, advocacy, support groups, respite care, legal support, health aide, educational support and access to community resources or referrals.

Target Population Served

Children birth through 8th grade

Service Area/Geographic Focus:

Hillsborough County

Bilingual Services: No

Funding Amount: \$395,049

Contact Information:

Address: 1002 East Dr. Martin Luther King Jr. Boulevard
Tampa, FL 33603

Phone: (813) 237-0914

Website: www.fectampa.org

Social Media: Facebook: [Family Enrichment Center](#)

Subcontracts: None

FAMILY HEALTHCARE FOUNDATION, THE

Connecting Kids to Care

Program Description

Connecting Kids to Care (CKC) is a program designed to reduce the number of eligible but uninsured children through enrollment in healthcare coverage and connecting them to appropriate care. CKC assists families with completing application or coverage renewal support. The program provides education to families and professionals to promote access to quality healthcare.

Target Population Served

Families with children birth through middle school age

Service Area/Geographic Focus:

Hillsborough County

Bilingual Services: Yes - Spanish

Funding Amount: \$405,624

Contact Information:

Phone: (813) 362-1413

Website: www.FamilyHealthcareFdn.org

Social Media: Facebook: [FamilyHealthcarefdn](https://www.facebook.com/FamilyHealthcarefdn)

Instagram: [@thefamilyhealthcarefoundation](https://www.instagram.com/thefamilyhealthcarefoundation)

Subcontracts: None

CodeMasters

Program Description

FEF CodeMasters provides youth hands-on opportunities to learn to code and create with technology to develop skills needed to pursue and succeed in the jobs of the future, and to begin to explore exciting science, technology, engineering, art, and mathematics (STEAM) careers.

Target Population Served

Children 1st through 8th grade

Service Area/Geographic Focus:

Hillsborough County Public School HOST Program, City of Tampa Park & Recreational Centers in the following zip codes: 33603, 33610 & 33619

Bilingual Services: No

Funding Amount: \$68,857

Contact Information:

Address: 201 E Kennedy Boulevard, Suite 1525
Tampa, FL 33602

Phone: (813) 272-2772

Website: www.fefonline.org/code

Social Media: Instagram: [@fefcodemasters](https://www.instagram.com/fefcodemasters)

Subcontracts: None

Successful Start

Program Description

Successful Start aims to address the educational needs of students by providing VPK to 3rd grade mathematics teachers in Hillsborough County Public Schools a high-quality professional development training.

Target Population Served

Elementary school (VPK – 3rd grade) mathematics teachers

Service Area/Geographic Focus:

Hillsborough County Public Schools

Bilingual Services: No

Funding Amount: \$982,176

Contact Information:

Address: 4600C University Center
Tallahassee, Florida 32839

Phone: (850)644-7619

Website: www.successfulstarttampa.com

Social Media: None

Subcontracts: None

GIRL SCOUTS OF WEST CENTRAL FLORIDA

Girl Scout Troop Program

Program Description

The Girl Scout Troop Program is designed to equip girls in kindergarten to fifth grade reach her full potential. Girls will participate in the Girl Scout Leadership Experience (GSLE) which offers a strong sense of self, positive values, challenge seeking, healthy relationships, and community problem solving. The GSLE combines a variety of activities with supportive, mentoring relationships and the three Girl Scout processes (Girl-Led, Cooperative Learning, and Learning by Doing). The program is supported by a tradition-driven, emotionally safe space for girls.

Target Population Served

Girls from kindergarten to fifth grade

Service Area/Geographic Focus:

Serving girls in the following zip codes: 33603, 33604, 33610 & 33619

Bilingual Services: No

Funding Amount: \$293,828

Contact Information:

Address: 4610 Eisenhower Boulevard
Tampa, FL 33603

Phone: (813) 281-4475

Website: www.gswcf.org

Social Media: Facebook: [Girl Scouts of West Central Florida](#)

Instagram: [@gswcf](#)

X: [@gswcf](#)

Subcontracts: None

GLAZER CHILDREN'S MUSEUM

Children's Board Free Tuesday

Program Description

Children's Board Free Tuesday provides free admission into Glazer Children's Museum for children and their parents or caregivers on the first Tuesday of each month. Monthly free admission will be offered from 9:30am to 5pm. (Hours subject to change in summer months).

Target Population Served

Families with children birth to ten years of age

Service Area/Geographic Focus:

Hillsborough County

Bilingual Services: Yes - Spanish

Funding Amount: \$76,013

Contact Information:

Address: 110 West Gasparilla Plaza
Tampa, FL 33602

Phone: (813) 443-3861

Website: www.glazermuseum.org

Social Media: Facebook: [Glazer Children's Museum](#)
X: [@GlazerMuseum](#)
Instagram: [@glazerchildrensmuseum](#)

Subcontracts: None

GLAZER CHILDREN'S MUSEUM

Learn & Play Tampa Bay

Program Description

The Learn & Play Tampa Bay program provides quality early learning experiences at the seven Children's Board Family Resource Centers. The program delivers weekly in-person developmental classes and provides take home activities that promote early learning and school readiness.

Target Population Served

Children birth to age five and their parents or caregivers

Service Area/Geographic Focus:

Hillsborough County

Bilingual Services:

Funding Amount: \$355,056

Contact Information:

Address: 110 West Gasparilla Plaza
Tampa, FL 33602

Phone: (833) 426-7529

Website: www.glazermuseum.org

Social Media: Facebook: [LearnPlayTampaBay](https://www.facebook.com/LearnPlayTampaBay)

X: [@GlazerMuseum](https://twitter.com/GlazerMuseum)

Instagram: [@glazerchildrensmuseum](https://www.instagram.com/glazerchildrensmuseum)

Subcontracts: None

GLAZER CHILDREN'S MUSEUM

Pop Up Play in Plant City

Program Description

Pop Up Play in Plant City is an exhibition program of Glazer Children's Museum that provides purposeful play to families, featuring rotating hands-on exhibit experiences designed for children ages birth to eight. These exhibits change three times per year, and are free to families who visit. These exhibits are located at the Plant City Children's Board Family Resource Center (301 North Palmer St. Tampa FL 33563).

Target Population Served

Families with children birth through age eight

Service Area/Geographic Focus:

East Hillsborough County

Bilingual Services: Yes - Spanish

Funding Amount: \$33,903

Contact Information:

Address: 110 West Gasparilla Plaza
Tampa, FL 33602

Phone: (813) 443-3861

Website: www.glazermuseum.org

Social Media: Facebook: [Glazer Children's Museum](https://www.facebook.com/GlazerChildrensMuseum)
X: [@GlazerMuseum](https://twitter.com/GlazerMuseum)

Instagram: [@glazerchildrensmuseum](https://www.instagram.com/glazerchildrensmuseum)

Subcontracts: None

GULF COAST JEWISH FAMILY AND COMMUNITY SERVICES

Good Afternoon Friends and Amigos

Program Description

Good Afternoon Friends and Amigos is an after school program that provides tutoring and homework assistance. Parents or caregivers of the students will be involved in their education, development, and family activities. Home visitation resources are available to parents and caregivers to help meet the child's identified needs.

Target Population Served

Kindergarten through 5th grade students enrolled at Reddick and Robinson Elementary schools

Service Area/Geographic Focus:

Wimauma and Plant City

Bilingual Services: Yes - Spanish

Funding Amount: \$444,708

Contact Information:

- Address:** 14041 Icot Boulevard
Clearwater, FL 33760
- Phone:** (727) 479-1800, extension # 3101
- Website:** www.gulfcoastjewishfamilyandcommunityservices.org
- Social Media:** Facebook: [Gulf Coast JFCS](https://www.facebook.com/GulfCoastJFCS)
X: [@GulfCoastJFCS](https://twitter.com/GulfCoastJFCS)
Instagram: [@GulfCoastJFCS](https://www.instagram.com/GulfCoastJFCS)
- Subcontracts:** None

GULF COAST JEWISH FAMILY AND COMMUNITY SERVICES

Padres De Crianza

Program Description

Padres De Crianza provides support services and social opportunities. The program is a Kinship Model, providing support services and social opportunities to non-dependency Hispanic/Latino caregivers and children birth through middle school age. The program will support children and families by providing case management, home visits, support groups, linkage to community supports, and telephone crisis intervention.

Target Population Served

Hispanic/Latino-identifying relative or non-relative caregivers with children birth to middle school age in their care who are not involved in state dependency care.

Service Area/Geographic Focus:

Hillsborough County

Bilingual Services: Yes - Spanish and English

Funding Amount: \$343,530

Contact Information:

Address: 3550 W Waters Street Ave.
Tampa, Florida 33614

Phone: (813) 352-5766

Website: www.gcjfcs.org

Social Media: Facebook: [Gulf Coast JFCS](https://www.facebook.com/GulfCoastJFCS)

X: [@GulfCoastJFCS](https://twitter.com/GulfCoastJFCS)

Instagram: [@GulfCoastJFCS](https://www.instagram.com/GulfCoastJFCS)

Subcontracts: None

GULF COAST JEWISH FAMILY AND COMMUNITY SERVICES

Teen Parent Engagement Program

Program Description

The Teen Parent Engagement Program is a leadership program for teen moms and dads. Our primary strategies are a diverse mix of workshops, home visitation, education, screening, mentoring, and case management. On-going engagement activities include training comprised of a two-day group retreat, monthly group workshops, varied mentorship experiences, and in-home visits. In-home visits include case management, developmental screenings, and parenting education.

Target Population Served

Pregnant Teens and Parents ages fourteen to nineteen years of age

Service Area/Geographic Focus:

Hillsborough County

Bilingual Services: Yes - Spanish and Creole

Funding Amount: \$229,490

Contact Information:

Address: 3550 West Waters Avenue, Suite #250

Tampa, FL 33614

Phone: (813) 930-7103

Website: www.gcjfccs.org

Social Media: Facebook: [Gulf Coast JFCS](#)

X: [@GulfCoastJFCS](#)

Instagram: [@GulfCoastJFCS](#)

Subcontracts: None

HEALTHY START COALITION OF HILLSBOROUGH COUNTY

Healthy Families Hillsborough

Program Description

Healthy Families Hillsborough is a nationally accredited home visitation program that supports parents by offering wrap-around services during and after pregnancy. The program offers personal and emotional support, parenting education, child developmental screenings, and helps to set goals that are individual to participating families with children up to age five. Services are voluntary and flexible to work with busy schedules.

Target Population Served

Parents expecting a baby or have a baby less than two months of age

Service Area/Geographic Focus:

Hillsborough County

Bilingual Services: Yes - Spanish

Funding Amount: \$2,151,930

Contact Information:

Address: 2806 North Armenia Avenue, Suite #100
Tampa, FL 33607

Phone: (813) 233-2800

Website: www.healthystartcoalition.org

Social Media: Facebook: [HSCHillsborough](https://www.facebook.com/HSCHillsborough)
X: [@HSCHillsborough](https://twitter.com/HSCHillsborough)
Instagram: [@HealthyStartHillsborough](https://www.instagram.com/HealthyStartHillsborough)

Subcontracts: Champions for Children
Children's Home Network
Success 4 Kids & Families

HEALTHY START COALITION OF HILLSBOROUGH COUNTY

HealthySteps Hillsborough

Program Description

HealthySteps Hillsborough supports families and their children age birth to three years by providing parenting education, information, referrals, and care coordination. Based in pediatric offices, HealthySteps Hillsborough connects with families during and between well-child visits to assist families with parenting concerns and challenges and meet families' specific needs to support strong parent/child attachment and healthy child development.

Target Population Served

Families with children age birth to three years who are pediatric care patients of Tampa General Hospital Brandon HealthPlex, USF Complex Care Clinics, and HealthPark Pediatrics

Service Area/Geographic Focus:

Hillsborough County

Bilingual Services: Yes - Spanish

Funding Amount: \$1,115,403

Contact Information:

Address: 2806 North Armenia Avenue, Suite #100
Tampa, FL 33607

Phone: (813) 539-0884

Website: www.healthystartcoalition.org

Social Media: Facebook: [HSCHillsborough](https://www.facebook.com/HSCHillsborough)

X: [@HSCHillsborough](https://twitter.com/HSCHillsborough)

Instagram: [@HealthyStartHillsborough](https://www.instagram.com/HealthyStartHillsborough)

Subcontracts: None

HEALTHY START COALITION OF HILLSBOROUGH COUNTY

Safe Baby Plus

Program Description

Safe Baby Plus is an educational program delivered to parents prior to hospital discharge with a newborn addressing the three leading causes of preventable infant death including; choosing a safe caregiver, preventing shaken baby syndrome, and practicing safe sleep. The program provides a developmental screening program for infants during their first year of life. The program also provides increased access and linkages to resources and safety education for pregnant women and women with children who are receiving the Special Supplemental Nutrition Program at Hillsborough County WIC sites. Safe Baby training and educational materials are also offered by certified Safe Baby instructors to early childhood professionals.

Target Population Served

Families with infants and professionals such as nurses, physicians, social workers or child welfare staff

Service Area/Geographic Focus:

Hillsborough County

Bilingual Services: Yes - Spanish

Funding Amount: \$1,359,952

Contact Information:

Address: 2806 North Armenia Avenue, Suite #100
Tampa, FL 33607

Phone: (813) 849-7999

Website: www.healthysafebaby.org

Social Media: Facebook: [HSCHillsborough](https://www.facebook.com/HSCHillsborough)

X: [@HSCHillsborough](https://twitter.com/HSCHillsborough)

Instagram: [@HealthyStartHillsborough](https://www.instagram.com/HealthyStartHillsborough)

Subcontracts: Success 4 Kids & Families
St. Joseph's Hospital

Water Warriors

Program Description

The Water Warriors program provides swim lessons and water safety education for beginner swimmers. Each lesson is 45 minutes and teaches skills such as floating, breath control, submerging, and water safety education. Participants and their parents/caregivers will also learn about water safety topics such as beach safety, home pool safety, and CPR.

Target Population Served

Ages three - eighteen

Service Area/Geographic Focus:

Hillsborough County

Bilingual Services: No

Funding Amount: \$96,096

Contact Information:

Address: 405 Beverly Blvd,
Brandon, FL 33511

Phone: (813) 689-0908

Website: high5inc.org

Social Media: None

Subcontracts: None

Quality Early Education System

Program Description

The Quality Early Education System supports children and families by providing training, coaching, professional development, resources and targeted specialized early childhood program intervention to enhance the quality of operations and learning environment.

The Conscious Awareness Learning Model (CALM) provides trainings and on-site instruction to teachers and families in social-emotional learning using the Conscious Discipline® approach to implement model activities in the classroom.

Literacy coaches work to develop pre-reading skills through small group activities with teachers in preschool settings. In addition, parents or caregivers receive books and literacy activities to use at home.

Target Population Served

Early Childhood Education providers and families with children birth to age five

Service Area/Geographic Focus:

Hillsborough County

Bilingual Services: Yes - Spanish

Funding Amount: \$2,706,665

Contact Information:

Address: 1602 North 15th Street, Suite #248
Tampa, FL 33605

Phone: (813) 259-6415

Website: www.calmhcc.org
www.earlyliteracymatters.com

Social Media: X: [@HCC_QEES](https://twitter.com/HCC_QEES)
Instagram: [@HCCQEES](https://www.instagram.com/HCCQEES)

Subcontracts: None

Tech Connect

Program Description

Tech Connect program equips students that are technologically challenged with the tools and knowledge required for digital access. Project staff work in collaboration with Hillsborough County Public Schools to help identify and plan for students.

Target Population Served

Families with elementary age school students enrolled in public schools (not virtual school) throughout Hillsborough County

Service Area/Geographic Focus:

Hillsborough County

Bilingual Services: Yes - Spanish

Funding Amount: \$423,550

Contact Information:

Address: 2306 North Howard Avenue
Tampa, FL 33607-2613

Phone: (813) 574-0283

Website: www.educationfoundation.com

Social Media: Facebook: [Hillsborough Education Foundation](#)
X: [@Hillsedufnd](#)
Instagram: [@Hillsedufnd](#)

Subcontracts: None

HISPANIC SERVICES COUNCIL

La Red de Padres Activos / Network of Active Parents

Program Description

La Red de Padres Activos is a parent engagement and family strengthening program that seeks to engage Latino parents in the education of their children and support the parent's own personal growth and development by hosting weekly workshops to educate parents about resources, parenting skills, child development stages, and navigation of the school system so that they may better understand their role and be more involved in their child's success in school. While the parents participate in social networking and educational workshops, La Red engages their children in literacy and learning activities.

Target Population Served

Latino parents with children three years of age through 8th grade

Service Area/Geographic Focus:

Plant City, North Tampa, West Tampa, Drew Park, Brandon and Ruskin/Wimauma

Bilingual Services: Yes - Spanish

Funding Amount: \$1,077,597

Contact Information:

Address: 7825 North Dale Mabry Hwy, Suite #102
Tampa, FL 33614

Phone: (813) 936-7700

Website: www.Hispanicservicescouncil.org

Social Media: Facebook: [Hispanic Services Council](https://www.facebook.com/HispanicServicesCouncil)
X: [@HispanicSVC](https://twitter.com/HispanicSVC)

Subcontracts: None

HOUSING AUTHORITY OF THE CITY OF TAMPA

Building Family Financial Skills

Program Description

Building Family Financial Skills provides financial wellness training for parents/caregivers. The program is delivered in four interactive sessions that uses tools to build everyone's own financial wellness plan and connect families to local financial related sources. A guest speaker from a financial institution is present for one session in each series to present material and to use as a resource.

Target Population Served

Families with children birth to eight years of age

Service Area/Geographic Focus:

Hillsborough County

Bilingual Services: No

Funding Amount: \$95,237

Contact Information:

Address: 5301 West Cypress Street
Tampa, FL 33607

Phone: (813) 341-9199

Website: <https://www.tampaha.org/>

Social Media: Facebook: [Tampa Housing Authority](#)
X: [@Tampahaorg](#)

Instagram: [@Tampahaorg](#)

Subcontracts: None

HOUSING AUTHORITY OF THE CITY OF TAMPA

Village Link Up

Program Description

Village Link Up provides case management, parent education, and supportive services with the goal of increasing parent engagement in child education and overall family well-being. The coordination of services to families supports the educational goals and academic success of children. The program assists in the development of a support plan with families, hosts educational workshops and offers referrals to community resources.

Target Population Served

Parents/caregivers with children in elementary school

Service Area/Geographic Focus:

Robles Park Village, C. Blythe Andrews, Seminole Park and Belmont Heights

Bilingual Services: Yes - Spanish

Funding Amount: \$343,170

Contact Information:

Address: 5301 West Cypress Street
Tampa, FL 33607

Phone: (813) 341-9101 x2140

Website: <https://www.tampaha.org/>

Social Media: Facebook: [Tampa Housing Authority](#)

X: [@Tampahaorg](#)

Instagram: [@Tampahaorg](#)

Subcontracts: None

INSTRUMENTS 4 LIFE INC.

Music Outreach Program

Program Description

The Music Outreach Program teaches children about the Ukelele, a musical instrument. They acquire knowledge of music definitions, practice hands-on chords, learn to play songs and earn their instruments. The program also offers instructions on musical topics and musical knowledge.

Target Population Served

Children Kindergarten through 8th grade

Service Area/Geographic Focus:

Hillsborough County Public Schools HOST Program, City of Tampa Park & Recreational Centers in the following zip codes: 33603, 33610 & 33619

Bilingual Services: No

Funding Amount: \$97,199

Contact Information:

Address: 1217 Magdalene Hill Dr.
Tampa, FL 33613

Phone: (813) 613-0239

Website: www.instruments4life.com

Social Media: Facebook: [@instruments4life](https://www.facebook.com/instruments4life)
Instagram: [@instruments4life](https://www.instagram.com/instruments4life)

Subcontracts: None

JOSHUA WAY OF HOPE, INC.

Building a Better Me

Program Description

The Building a Better Me program provides character development training classes and activities based on the Botvin Life Skills evidence based program. Children will participate in five-character development training classes discussing the four learning styles with topic/activities including role-playing scenarios, literacy through game play, toolbox techniques with topics, and identifying triggers. The program provides referrals to parent/caregivers for services needed based on observations and communication.

Target Population Served

Children 3rd through 8th grade

Service Area/Geographic Focus:

Hillsborough County Public Schools HOST Program, City of Tampa Park & Recreational Centers in the following zip codes: 33603, 33610 & 33619

Bilingual Services: No

Funding Amount: \$104,421

Contact Information:

Address: 4709 N. 40th Street
Tampa, FL 33610

Phone: (813) 546-1896

Website: www.Joshuawayofhope.org

Social Media: Facebook: [Joshua Way of Hope](https://www.facebook.com/JoshuaWayofHope)
Instagram: [@joshuawayofhope](https://www.instagram.com/joshuawayofhope)

Subcontracts: None

Life Skills 360 Training Institute

Program Description

The Life Skills 360 Training Institute provides a robust training program that teaches students an array of skills, techniques, and tools to utilize in their journey of life. The basic foundation of the Life Skills program is built upon a highly regarded evidence-based prevention curriculum. Alongside this, we incorporate interactive exercises and group discussions to ensure an engaging learning experience. Students learn how to manage anger, social skills, self-esteem, decision making, how to deal with stress and effect communication.

Target Population Served

Children 3rd through 8th grade

Service Area/Geographic Focus:

City of Tampa and City of Plant City

Bilingual Services: No

Funding Amount: \$144,912

Contact Information:

Email: Kayetrenia.Nichols@JoshuaWayofHope.org

Address: 4709 N. 40th Street
Tampa, FL 33610

Phone: (813) 546-1896

Website: www.Joshuawayofhope.org

Social Media: Facebook: [Joshua Way of Hope](https://www.facebook.com/JoshuaWayofHope)

Subcontracts: Instagram: [@joshuawayofhope](https://www.instagram.com/joshuawayofhope)
None

JUST INITIATIVE

Woven Empowerment – WE Program

Program Description

The WE Program collaborates with families to provide children from birth to age eight person-centered and strengths-based case management, mentoring, educational workshops, and tangible assistance for basic needs. In the WE Program, families stabilize while decreasing their stress and increasing their support systems.

Target Population Served

Families with children up to age eight who have been impacted by homelessness or are at risk of homelessness

Service Area/Geographic Focus:

Target zip codes of 33603, 33604, 33605, 33610, and 33612

Bilingual Services: No

Funding Amount: \$106,517

Contact Information:

Address: 3309 N 15th St
Tampa, FL 33605

Phone: (813) 803-0220

Website: www.justinitiative.com

Social Media: Facebook: [@justinitiative](https://www.facebook.com/justinitiative)
X: [@justinitiative](https://twitter.com/justinitiative)
Instagram: [@justinitiative](https://www.instagram.com/justinitiative)

Subcontracts: None

METROPOLITAN MINISTRIES

C.R.E.A.T.E. School Age Program

Program Description

The Children's Recreation, Education, Arts and Therapeutic Experience (C.R.E.A.T.E.) is an after-school program providing children with a nurturing therapeutic environment designed to alleviate the impacts of trauma and homelessness. It offers cooperative play, Science, Technology, Engineering, Art and Math (STEAM) activities and engages parents or caregivers in family events.

Target Population Served

Elementary age children experiencing or who have experienced homelessness or housing instability

Service Area/Geographic Focus:

Elementary age children who reside at Miracle Place or attend Sullivan or Mango Elementary

Bilingual Services: Yes - Spanish

Funding Amount: \$556,227

Contact Information:

Address: 2002 North Florida Avenue
Tampa, FL 33602

Phone: (813) 209-1000

Website: www.metromin.org

Social Media: Facebook: [Metropolitan Ministries](#)

X: [@metroministries](#)

Instagram: [@metro_min](#)

Subcontracts: None

METROPOLITAN MINISTRIES

First Hug

Program Description

First Hug is an intensive case management program that uses a trauma informed care approach to stabilize homeless families and address barriers to self-sufficiency. Services include connecting families to community resources, early intervention or education, child care, employment, housing search/placement, and home safety.

Target Population Served

Homeless families with children birth through middle school

Service Area/Geographic Focus:

Hillsborough County

Bilingual Services: Yes - Spanish

Funding Amount: \$1,448,939

Contact Information:

Address: 2002 North Florida Avenue
Tampa, FL 33602

Phone: (813) 209-1006

Website: www.metromin.org

Social Media: Facebook: [Metropolitan Ministries](https://www.facebook.com/MetropolitanMinistries)
X: [@metroministries](https://twitter.com/metroministries)
Instagram: [@metro_min](https://www.instagram.com/metro_min)

Subcontracts: None

METROPOLITAN MINISTRIES

Pathways to Hope

Program Description

Pathways to Hope is a homeless prevention program that provides support to families who are experiencing economic instability and/or housing insecurity. The program is designed to provide support to families based on their personal, social, and community networks' strengths and is specially tailored to each family based on their current situation and needs. The goal is to assist families with attaining housing stability.

Services include access to case management support, educational workshops, goal planning, and community resources.

Target Population Served

Families with children in Elementary and Middle School.

Service Area/Geographic Focus:

Families with children at the following Hillsborough County Public Schools: Lewis, Robinson, Forest Hills, Oak Park, Greco, Jennings, Mango, Pinecrest, Dover, and Turkey Creek.

Bilingual Services: Yes - Spanish

Funding Amount: \$1,087,192

Contact Information:

Address: 2002 North Florida Avenue
Tampa, FL 33602

Phone: (813) 209-1006

Website: www.metromin.org

Social Media: Facebook: [Metropolitan Ministries](https://www.facebook.com/MetropolitanMinistries)

X: [@metroministries](https://twitter.com/metroministries)

Instagram: [@metro_min](https://www.instagram.com/metro_min)

Subcontracts: Hispanic Services Council

ONE MORE CHILD

One More Child Family Support

Program Description

The Family Support Program at One More Child provides help to families that are experiencing tough times and need a little extra support. Using evidence-based practices our team provides training and assistance that will improve parenting skills, develop household management strategies and increase wraparound support to strengthen families. This program uses an individualized approach that will help parents better connect with their children, reduce stress, and increase meaningful connections to community supports. Services are provided in a combination of settings, both in home and in the community.

Target Population Served

Parents/Caregivers with children from birth through age eight

Service Area/Geographic Focus:

33603, 33605, 33610, 33612, and 33617

Bilingual Services: No

Funding Amount: \$144,000

Contact Information:

Address: 4038 North Falkenburg Road
Tampa, FL 33610

Phone: (813) 252-9762

Website: www.onemorechild.org

Social Media: Facebook: [@OneMoreChildSince1904](https://www.facebook.com/OneMoreChildSince1904)

Instagram: [@onemorechild](https://www.instagram.com/onemorechild)

X: [@One_MoreChild](https://twitter.com/One_MoreChild)

Subcontracts: None

PARENTS AND CHILDREN ADVANCE TOGETHER (PCAT) LITERACY MINISTRIES

South County Literacy Initiative

Program Description

The South County Literacy Initiative is an after school program to assist low performing students by increasing their reading and comprehension skills with one-on-one or group instruction. An individualized instruction plan is developed with teachers. Parents are engaged by bilingual personnel, as needed, to involve them in their child's educational success.

Target Population Served

Kindergarten, 1st and 2nd grade students

Service Area/Geographic Focus:

Ruskin Elementary School

Bilingual Services: Yes - Spanish

Funding Amount: \$473,756

Contact Information:

Address: 5004 East Fowler Avenue, Suite C-345
Tampa, FL 33617

Phone: (813) 598-2103

Website: www.pcatliteracyministries.org

Social Media: None

Subcontracts: None

PARENTS AND CHILDREN ADVANCE TOGETHER (PCAT) LITERACY MINISTRIES

Sulphur Springs Literacy Initiative

Program Description

The PCAT Literacy program provides after school tutoring to kindergarten students who are reading below level. Students are referred to our program by their classroom teacher and are eligible to receive tutoring two days a week in a small group or one-on-one setting.

Target Population Served

Kindergarten students

Service Area/Geographic Focus:

Sulphur Springs K-8 Community School

Bilingual Services: Yes - Spanish, French and Haitian Creole

Funding Amount: \$147,756

Contact Information:

Address: 5004 East Fowler Avenue, Suite C-345
Tampa, FL 33617

Phone: (813) 467-6826

Website: www.pcatliteracyministries.org

Social Media: None

Subcontracts: None

POSITIVE SPIN

Empowering a Community with Hope (E.A.C.H. One)

Program Description

The E.A.C.H. One Initiative provides in-home support and case management services for families. The services support overall wellbeing through family team conferencing and developing support plans to address identified needs. Developmental screenings are offered to young children and support groups are available to youth.

Target Population Served

Families with children birth through 8th grade

Service Area/Geographic Focus:

Zip codes 33604, 33605, 33607, 33610, 33612, 33613 and 33617

Bilingual Services: Yes - Spanish

Funding Amount: \$864,174

Contact Information:

Address: 5118 North 56th Street, Suite #224
Tampa, FL 33610

Phone: (813) 977-7677

Website: www.positivespinfl.org

Social Media: Facebook: [Positive Spin Inc](#)

Subcontracts: None

PRESERVE VISION FLORIDA

Children's Vision Health and Safety Services

Program Description

The Children's Vision Health and Safety Services program provides vision screenings, eye safety education at the Children's Board Family Resource Centers and other community locations. It may provide eyewear for children with an identified vision condition and their parents/caregivers. The program supports children and families by providing early identification of vision health conditions, to vision care exercises, and referral for medical follow up and ongoing support to promote vision health.

Target Population Served

Children birth to fourteen and their parents/caregivers

Service Area/Geographic Focus:

Hillsborough County

Bilingual Services: Yes - Spanish

Funding Amount: \$570,000

Contact Information:

Address: 9200 Seminole Boulevard
Seminole, FL 33772

Phone: (813) 874-2020

Website: www.pvfla.org

Social Media: Facebook: [Preserve Vision Florida](#)
Instagram: [@preservevisionflorida](#)
X: [@preservevision](#)

Subcontracts: None

REACHUP, INC.

Giving Resources and Opportunities with Trust and Hope (GROWTH) with Doulas and Dads

Program Description

The GROWTH with Doulas and Dads program provides pregnant women with Doula support services that promote healthy births and mother/child bonding. Parents or caregivers can receive prenatal support services, health education, mentoring, hospital labor and delivery assistance, breastfeeding, and nutritional guidance. In addition, the 24/7 Dad program increases “pro-fathering” knowledge, skills, and attitudes through structured weekly education sessions.

Target Population Served

Pregnant women and/or caregivers of children birth to eight weeks of age and fathers/caregivers of children birth to age fourteen

Service Area/Geographic Focus:

Hillsborough County

Bilingual Services: Yes - Spanish

Funding Amount: \$951,479

Contact Information:

Address: 2902 North Armenia Avenue, Suite #100
Tampa, FL 33607

Phone: (813) 712-6300

Website: www.reachupincorporated.org

Social Media: Facebook: [Reachup Inc.](#)

X: [@reachup_inc](#)

Instagram: [@Reachupincorporated](#)

Subcontracts: Champions For Children

REDEFINERS WORLD LANGUAGES

Multilingual Citizens Program (MCP)

Program Description

The Multilingual Citizens Program (MCP) provides an evidenced-informed education program aimed at skill development critical to today's workforce, providing outcome-measured courses in English and Spanish for parents/caregivers and their children through five distinct courses at Children's Board Family Resource Centers in: North Tampa, Temple Terrace, Central Tampa, Town 'N Country, South County, Brandon and Plant City.

Target Population Served

Parents/Caregivers and children ages five to twelve

Service Area/Geographic Focus:

Hillsborough County

Bilingual Services: Yes - Spanish

Funding Amount: \$515,672

Contact Information:

Address: 8056 North 56th Street
Tampa, FL 33617

Phone: (813) 530-2313

Website: www.redefinerswl.org

Social Media: Facebook: [@redefinerswlp](https://www.facebook.com/redefinerswlp)
Instagram: [@redefinerswl](https://www.instagram.com/redefinerswl)
X: [@redefinerswl](https://twitter.com/redefinerswl)

Subcontracts: None

REDEFINERS WORLD LANGUAGES

Global Explorers Program

Program Description

The Global Explorers Program provides services to promote character development through language exposure classes afterschool and summertime. The program will support children and families by exposing participants to new cultures, communications skills in a foreign language, and prepare participants to be global citizens. The program will teach the participants how to speak Spanish, Arabic, and Mandarin.

Target Population Served

Children Kindergarten through 5th grade and their parents & caregivers

Service Area/Geographic Focus:

Hillsborough County Public Schools HOST Program, City of Tampa Park & Recreational Centers in the following zip codes: 33603,33610 & 33619

Bilingual Services: Yes - Spanish

Funding Amount: \$144,000

Contact Information:

Address: 8056 North 56th Street
Tampa, FL 33617

Phone: (813) 530-2313

Website: www.redefinierswl.org

Social Media: Facebook: [@redefinierswlp](https://www.facebook.com/redefinierswlp)
Instagram: [@redefinierswl](https://www.instagram.com/redefinierswl)
X: [@redefinierswl](https://twitter.com/redefinierswl)

Subcontracts: None

RENAISSANCE LEARNING

myON Reader

Program Description

The Read on myON Project provides access to a digital library to all children from birth through 8th grade in Hillsborough County. The program offers literacy tools and a large collection of enhanced digital books with content in English, French, and Spanish to encourage reading.

Target Population Served

Children birth through 8th grade

Service Area/Geographic Focus:

Hillsborough County

Bilingual Services: Yes - Spanish

Funding Amount: \$100,000

Contact Information:

Address: 2911 Peach Street
Wisconsin Rapids, WI 54494

Email: streetteam@myon.com

Website: www.readonmyon.com

Social Media: Facebook: [Readonmyon](https://www.facebook.com/Readonmyon)
X: [@myonreader](https://twitter.com/myonreader)

Subcontracts: None

RESOURCE EMPOWERMENT CENTRE

Villages Café

Program Description

Villages Children and Families Engaging (CAFÉ) program provides in person positive social behavior, parental engagement, and resource navigation supports to parents and children. The program offers workshops, mentoring, family success planning, and sharing community resources.

Target Population Served

Families with children ages nine through middle school

Service Area/Geographic Focus:

Hillsborough County

Bilingual Services: No

Funding Amount: \$158,608

Contact Information:

Address: 9309 N Florida Ave., Suite 102
Tampa, FL 33612

Website: therectampa.org

Social Media: None

Subcontracts: None

ROOTED IN PLAY CORP

Popup Adventure Playground Project

Program Description

Rooted in Play's mission is to ensure that all children have regular access to self-directed play opportunities. We accomplish this by hosting free, monthly popup adventures at playgrounds, share information and resources on the importance of play with parents and caregivers, and conduct play workshops for early childhood professionals.

Target Population Served

Children, families, and professionals located within Hillsborough County.

Service Area/Geographic Focus:

Target zip codes: 33614, 33604, 33607, 33602

Bilingual Services: No

Funding Amount: \$33,863

Contact Information:

Address: 7611 S. Sparkman St.
Tampa, FL 33616

Phone: (813) 494-2637

Website: www.rootedinplay.org

Social Media: Facebook: [@RootedinPlay](https://www.facebook.com/RootedinPlay)
Instagram: [@rootedinplayorg](https://www.instagram.com/rootedinplayorg)

Subcontracts: None

SENIORS IN SERVICE OF TAMPA BAY

Readers in Motion

Program Description

Readers in Motion provides intergenerational tutoring and mentoring by “grandparent” role models in Kindergarten, 1st and 2nd grade classrooms. The program also offers special activities including at home learning materials, reading challenges and STEM events for the whole family.

Target Population Served

Kindergarten, 1st and 2nd grade students

Service Area/Geographic Focus:

Oak Grove Elementary School

Bilingual Services: Yes - Spanish

Funding Amount: \$109,421

Contact Information:

Address: 1306 West Sligh Avenue
Tampa, FL 33604

Phone: (813) 932-5228

Website: www.seniorsinservice.org

Social Media: Facebook: [Seniors in Service](#)

Subcontracts: None

SPRING OF TAMPA BAY, THE

Family Safety from Domestic Violence

Program Description

The Family Safety from Domestic Violence program provides case management and support services at the Outreach Office. The program offers safety planning, support groups, linkage to community resources, and assistance with filing injunctions for protection.

Target Population Served

Families experiencing domestic violence

Service Area/Geographic Focus:

Hillsborough County

Bilingual Services: Yes - Spanish

Funding Amount: \$366,046

Contact Information:

Address: 211 North Willow Avenue
Tampa, FL 33606

Phone: (813) 749-8764

Website: www.thespring.org

Social Media: Facebook: [The Spring TB](#)
X: [@TheSpringTB](#)
Instagram: [@TheSpringTB](#)

Subcontracts: None

ST. JOSEPH'S CHILDREN'S HOSPITAL

Mobile Health and Safety Education

Program Description

The Mobile Health and Safety Education program provides services in community-based locations and at Children's Board Family Resource Centers. This program includes both mobile classroom health and safety education and access to medical services through a mobile clinic.

The program also provides classes at your site with a focus on educating children in age-appropriate ways that make learning about health and safety fun and educational. Caregiver education is also provided related to CPR/First Aid certification, car seat safety and so much more. To learn more about our classes offered and to submit a request for services please visit www.stjoesmobile.org.

The Mobile Medical Clinic supports children and families by providing opportunities for caregivers and their children to participate in developmental screening, mobile/medical pediatric health services (including well child visits and immunizations), and hearing/vision screenings.

Target Population Served

Children birth through eighteen years of age and their families

Service Area/Geographic Focus:

Hillsborough County

Bilingual Services: Yes- Spanish

Funding Amount: \$1,083,468

Contact Information:

Address: 4600 North Habana Avenue, Suite #26

Tampa, FL 33614

Phone: (813) 615-0919 or (813) 615-0589

Website: <https://baycare.org/sjch>

Social Media: Facebook: [Stjosephschildrens](https://www.facebook.com/Stjosephschildrens)

X: [@Baycare](https://twitter.com/Baycare)

Subcontracts: None

ST. JOSEPH'S WOMEN'S HOSPITAL

Community Maternity Clinic

Program Description

The Community Maternity Clinic provides high-risk maternal and fetal medicine services and connects patients with high-risk OB care. The program also provides participants with wrap around services such as social service support, lactation support, dietitian support, education on infant safety, and referrals for services to other resources in the community.

Target Population Served

Uninsured or underinsured pregnant women and their families

Service Area/Geographic Focus:

Hillsborough County

Bilingual Services: Yes

Funding Amount: \$835,548

Contact Information:

Address: 4321 N. MacDill Ave; Suite 201
Tampa, FL 33607

Phone: (813) 356-7711

Website: www.baycare.org

Social Media: Facebook: [St Josephs Womens Hospital](#)

X: [@Baycare](#)

Instagram: [@Baycare](#)

Subcontracts: None

ST. JOSEPH'S WOMEN'S HOSPITAL

Supporting Motherhood and More

Program Description

Supporting Motherhood and More is an individualized, live telehealth counseling program offered for women (pregnant and postpartum up to two years) who may be experiencing perinatal depression or other mood disorders associated with pregnancy and/or birth. Support groups are led by a clinical social worker.

Target Population Served

Pregnant and postpartum women

Service Area/Geographic Focus:

Hillsborough County

Bilingual Services: Telephonic interpreter available if needed

Funding Amount: \$196,608

Contact Information:

Address: 3030 West Dr. Martin Luther King Jr. Boulevard,
Suite #404

Tampa, FL 33607

Phone: (813) 872-3925

Website: www.baycare.org/hospitals/st.josephs-womens-

Social Media: hospital/patients-and-visitor

Facebook: [St Josephs Womens Hospital](https://www.facebook.com/StJosephsWomensHospital)

X: [@Baycare](https://twitter.com/Baycare)

Instagram: [@Baycare](https://www.instagram.com/Baycare)

Subcontracts: None

SUCCESS 4 KIDS AND FAMILIES

Successful Families

Program Description

The Successful Families program provides bilingual, culturally competent, community-based services for children and families in East and South county communities. We coordinate access to needed services including counseling and parenting support services through the Nurturing Parenting Programs.

Target Population Served

Families with children birth to 8th grade

Service Area/Geographic Focus:

East (Plant City/Dover) and South (Wimauma/Ruskin) Hillsborough County

Bilingual Services: Yes - Spanish and English

Funding Amount: \$549,174

Contact Information:

Address: 2902 North Armenia Avenue, Suite #200
Tampa, FL 33607

Phone: (813) 862-8742
(813) 490-5490

Website: www.S4KF.org

Social Media: Facebook: [Success 4 Kids and Families](#)
X: [@S4KF](#)

Subcontracts: None

TAMPA METROPOLITAN AREA YMCA

Sulphur Springs YMCA Out of School Time

Program Description

The Sulphur Springs YMCA Out of School Time is an after school and summer program to support children in reaching their academic milestones through participation in literacy programs, Science, Technology, Engineering and Math (STEM) activities, and enrichment clubs.

Target Population Served

Kindergarten through 5th grade

Service Area/Geographic Focus:

Sulphur Springs K-8 Community School

Bilingual Services: Yes - Spanish

Funding Amount: \$327,972

Contact Information:

Address: 8412 North 13th Street
Tampa, FL 33604

Phone: (813) 224-9622

Website: www.tampaymca.org

Social Media: Facebook: [Tampa YMCA](#)
Instagram: [@TampaYMCA](#)
X: [@TampaYMCA](#)

Subcontracts: None

TAMPA MUSEUM OF ART

Children's Board Free Family Day

Program Description

Children's Board Free Family Day provides free admission into the Tampa Museum of Art for children and their parents or caregivers. Free admission will be offered from 11am to 4pm on the following dates: February 3, 2024; April 27, 2024; and September 7, 2024. Families will be able to participate in a day of art, creativity, and fun. Enjoy art making projects, music, performances, gallery activities, refreshments, and more, all inspired by the Museum's exhibitions.

Target Population Served

Families with children ages six to fourteen years old

Service Area/Geographic Focus:

Hillsborough County

Bilingual Services: Yes - Spanish

Funding Amount: \$54,814

Contact Information:

Address: 120 West Gasparilla Plaza
Tampa, FL 33602

Phone: (813) 274-8130

Website: www.TampaMuseum.org

Social Media: Facebook: [@TampaMuseumofArt](https://www.facebook.com/TampaMuseumofArt)
Instagram: [@TampaMuseumofArt](https://www.instagram.com/TampaMuseumofArt)
X: [@TampaMuseumArt](https://twitter.com/TampaMuseumArt)

Subcontracts: None

UNIVERSITY AREA COMMUNITY DEVELOPMENT CORPORATION

Get Moving! Mind, Body, Soul

Program Description

The Moving program is a comprehensive wellness program that focuses on improving the health and nutrition of University Area residents, while meeting the individual where they are in life. The program strives to create a suitable living environment to promote neighborhood sustainability, by offering healthy activities through organized sports and educational classes. From indoor basketball leagues to swimming & soccer in the community park, all organized sports are available to residents who are learning for the first time, as well as those who have “been doing it for years”. Additionally, fitness classes paired with nutritional cooking & gardening courses encourages participants at every level in life.

Target Population Served

Children ages seven to fourteen years old

Service Area/Geographic Focus:

North Tampa Area

Bilingual Services: Yes - Spanish

Funding Amount: \$315,145

Contact Information:

Address: 14013 North 22nd Street
Tampa, FL 33613

Phone: (813) 558-5212

Website: www.uacdc.org

Social Media: Facebook: [@UnivAreaCDC](https://www.facebook.com/UnivAreaCDC)
X: [@UnivAreaCDC](https://twitter.com/UnivAreaCDC)
Instagram: [@UnivAreaCDC](https://www.instagram.com/UnivAreaCDC)

Subcontracts: None

UNIVERSITY OF SOUTH FLORIDA BOARD OF TRUSTEES, THE

*Helping our Toddlers, Developing our Children's Skills (HOTDOCS)
& Developing Our Children's Skills K-5 (DOCS K-5)*

Program Description

HOT DOCS & DOCS K-5 are parent training programs that teaches caregivers and professionals how to support the social and emotional functioning of their children and to create a safe home environment. HOT DOCS focuses on the needs of young children birth to five years of age, while DOCS K-5 focuses on children five to twelve years of age. Both six-week programs (two-hour weekly sessions) also teach parents/caregivers how to access corresponding community resources. Classes are held in locations throughout the county.

Target Population Served

Families with children birth through elementary school age

Service Area/Geographic Focus:

Hillsborough County

Bilingual Services: No

Funding Amount: \$348,388

Contact Information:

Address: 13101 North Bruce B. Downs Boulevard
Tampa, FL 33612

Phone: (813) 974-1048

Website: hotdocs.health.usf.edu

Social Media: Facebook: [DOCS Parents Program](#)
Instagram: [@DOCSparentingprograms](#)

Subcontracts: None

Hillsborough HIPPY Parent Involvement Project

Program Description

The Hillsborough HIPPY Parent Involvement Project trains parents and caregivers to prepare their preschool age children for early success in school through an evidence-based school readiness curriculum. HIPPY provides weekly in home visits where parents and caregivers are coached in age appropriate activities, developmental screenings, monthly family education events, and care coordination as needed. The program works with the Center for Autistic and Related Disorders (CARD) to support families with children on the Autism Spectrum.

Target Population Served

Parents and caregivers of children three to five years of age

Service Area/Geographic Focus:

Hillsborough County

Bilingual Services: Yes - Spanish

Funding Amount: \$1,503,909

Contact Information:

Address: 13301 Bruce B. Downs Boulevard, MHC #2113A
Tampa, FL 33612

Phone: (813) 974-4909

Website: floridahippy.fmhi.usf.edu

Social Media: Facebook: [Hillsborough HIPPY](#)

Subcontracts: Success 4 Kids and Families

UNIVERSITY OF SOUTH FLORIDA BOARD OF TRUSTEES, THE

Program-Wide Positive Behavior Support (PWPBS)

Program Description

Program-Wide Positive Behavior Support (PWPBS) partners with early childhood centers and family child care homes to support social-emotional development in children, birth to five years of age. Sites receive training, materials, and educational coaching on how to best support all their children with social-emotional skills, while also reducing challenging behavior. Monthly training is also available and open to early childhood educators.

Target Population Served

Early education providers (center-based and family child care homes), administrators, children birth to five years of age and their caregivers/parents

Service Area/Geographic Focus:

Hillsborough County

Bilingual Services: Yes - Spanish and Sign Language

Funding Amount: \$774,973

Contact Information:

Address: 13301 Bruce B. Downs Boulevard, MHC #2113A
Tampa, FL 33612

Phone: (813) 974-1455

Website: pwpbs.cbcs.usf.edu

Social Media: Facebook: [PWPBS](#)

Subcontracts: None

Trauma-Informed Schools: Tiered Interventions

Program Description

The program provides students, all school faculty, and staff with Effinity Educator Resilience training, mindfulness coaching, and Child-Adult Relationship (CARE) training. Services include CARE in classroom training, CARE coach training, small group skill building to the students, and individualized teacher coaching in the classroom.

Target Population Served

Children enrolled in Kindergarten through 8th grade

Service Area/Geographic Focus:

Children enrolled in Frost Elementary and Giunta Middle School

Bilingual Services: Yes - Spanish

Funding Amount: \$1,061,970

Contact Information:

Address: 13101 Bruce B. Downs Blvd
Tampa, FL 33612

Phone: (813) 974-1048

Email: traumainformedschools@usf.edu

Social Media: None

Subcontracts: None

